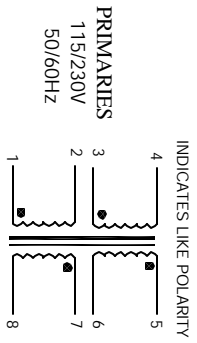


The information contained in this drawing is the sole property of CWS Specialist. Any reproduction in part or whole without written permission is prohibited.

REVISION HISTORY

REV	ECN	DESCRIPTION	BY	DATE	CHK	DATE
A		PRODUCTION RELEASE	TKK	4/16/08	JLU	4/16/08



5 WHERE SHOWN, USING A PERMANENT MARKING METHOD  
MARK PART NUMBER AND REVISION

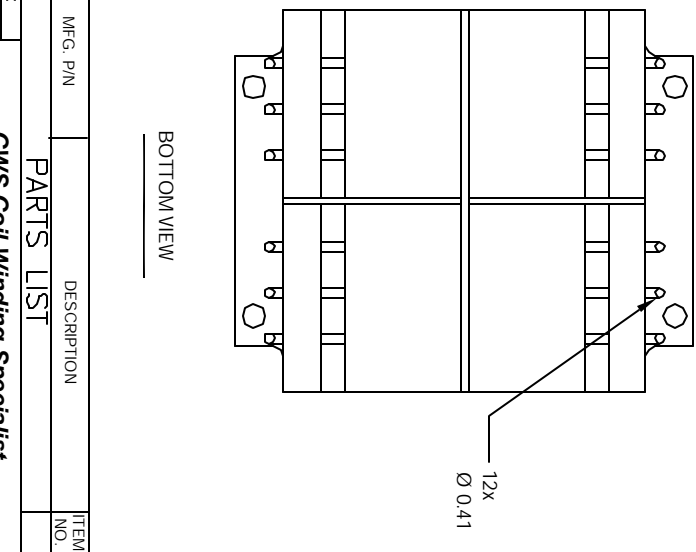
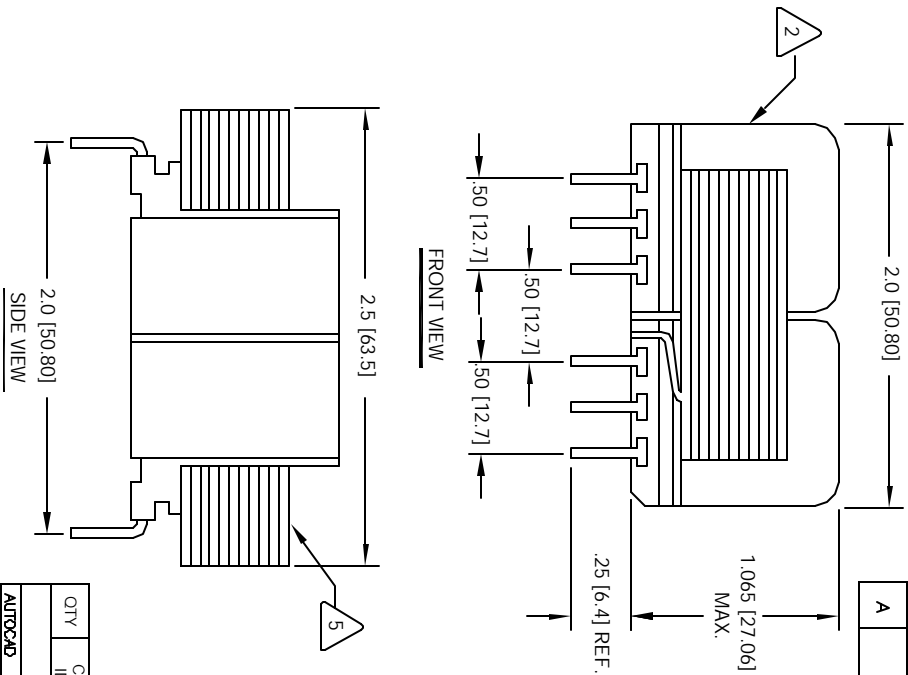
4 CONTACT CWS FOR MORE INFORMATION  
BUT NOT CERTIFIED OR TESTED BY THESE AGENCIES  
DESIGNED TO MEET UL, CSA, TUV STANDARDS,  
CONCENTRIC CONSTRUCTION

3 VOLT-AMPERES RATING = 12 VA  
SPECIFICATIONS @ 25°C

2 WIRE: UL RECOGNIZED 130°C RATED MAGNET WIRE  
CWS BYTEAMARK OR OTHER APPROVED PART  
CORE: 50 Hz / 60 Hz LAMINATION

1 BOBBIN RATING CLASS B (130°C) REQUIRED  
MATERIAL: UL RECOGNIZED 94V-0 FOR FLAMMABILITY

NOTES: UNLESS OTHERWISE SPECIFIED,  
READ NOTES FROM BOTTOM TO TOP



UNLESS OTHERWISE SPECIFIED

DIMENSIONING AND TOLERANCES PER ANSI Y14.5M	FRAM	DATE
ALL DIMENSIONS ARE IN INCHES AND DIMETERS	TKK	4/15/05
TOLERANCE INCHES: .000<-E.005 .005<-E.015 .015<-E.030 .030<-E.127 .127<-E.254	ENDR	4/15/05
TOLERANCES METERS: .000<-E.127 .127<-E.254	APPR	4/15/05
ASSEMBLY PRODUCTION	JLU	

DO NOT SCALE DRAWING

QTY	CODE	IDENT	MFG. P/N	DESCRIPTION	ITEM NO.
				<b>PARTS LIST</b>	
	AUTOCAD		X		
	SOLIDWORKS				
	SIGN				
	FRAM	DATE		<b>CWS Coil Winding Specialist</b>	
	TKK	4/15/05		1510 E. Edinger Ave. Unit B, Santa Ana, CA 92705	
	ENDR	4/15/05		Power Transformer	
	APPR	4/15/05		EPL Series, 12VA, 1.065" High	
	JLU			SIZE DIMS. NO.	
				<b>B</b>	
				EPL-12-16	REV A
				SCALE	
				Z=1	
				SHEET 1	OF 1